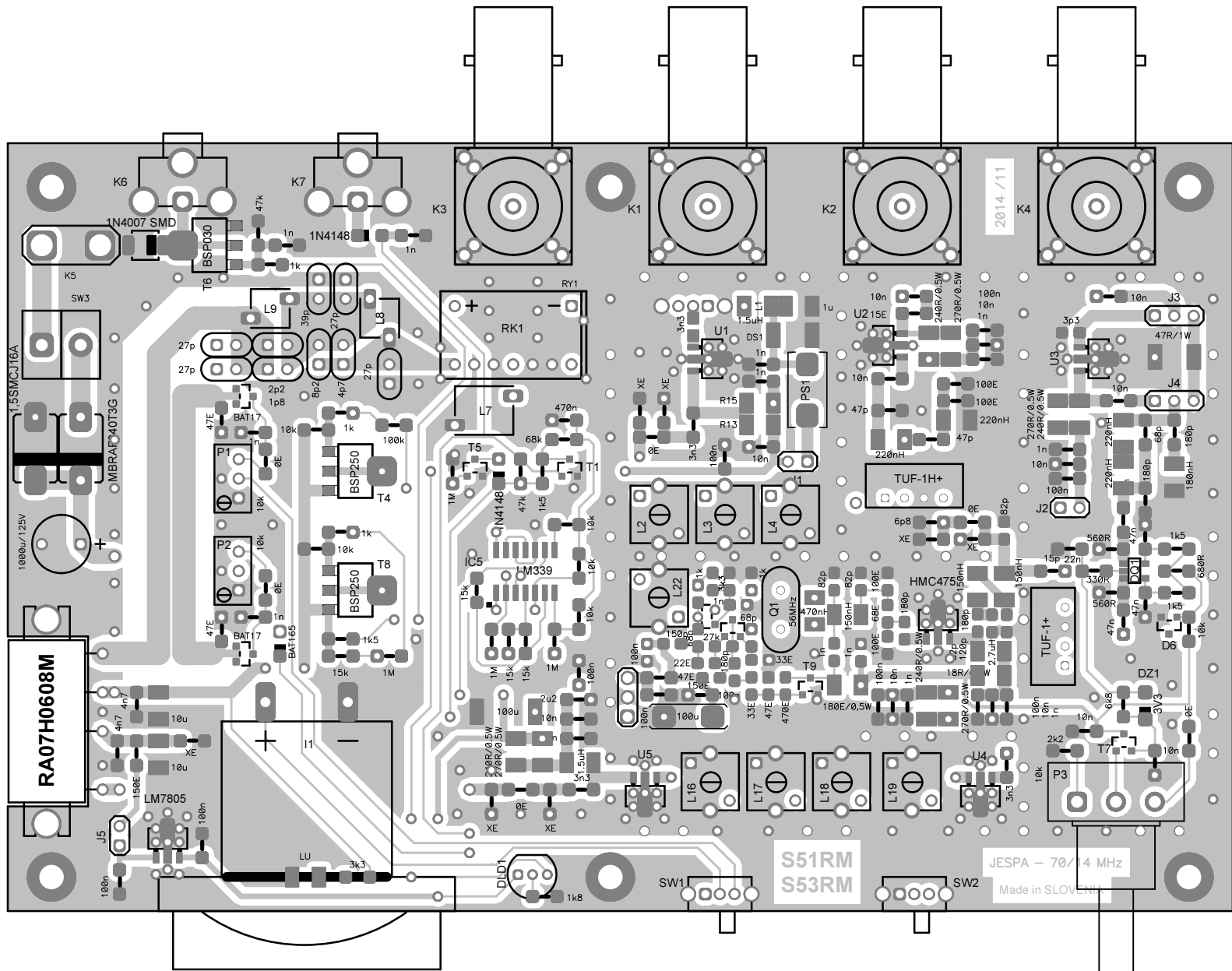
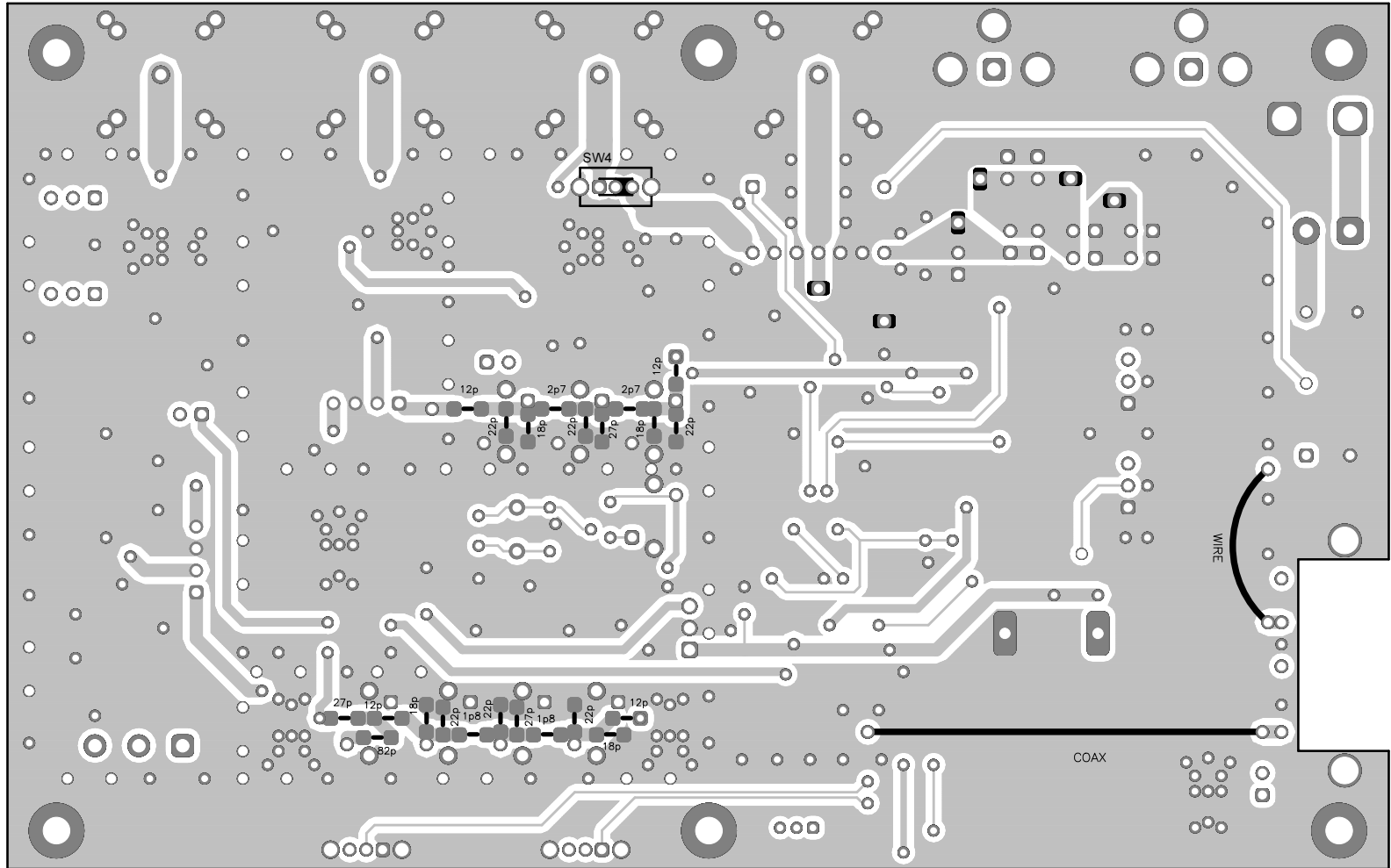


Title JESPA - 70/14 - 10W		
Size A3	Number S53WW & S53RM, S51RM	Rev 2
Date 10.01.2013	Drawn by RM&RM	
Filename JESPA.sch	Sheet 1 of 2	





Count	ComponentName	RefDes	PatternName	Value	Description
1	1,5SMCJ16A	D8	SMC	1,5SMCJ16A	Resistor
1	13.8V	K5	+13.8V		Diode
1	BAP70Q	DQ1	SOT-753	HSMP-3866	
2	BAT17	D3	SOT-23 (NKA)	BAT17	Schottky Diode
1	BAV99	D4 D6	SOT-23 (NKA)		Glass Zener Diode, 500 Milliwatt
1	BC849C	T7	SOT-23 (EBC)		NPN Transistor
3	BFR93A	T2 T3 T9	BFR93A		NPN Transistor
1	BIKOLOR-LED	DLD1	BIKOLOR-LED	Zelena/Rdeca	Light Emitting Diode
1	BNC	K4	BNC	14MHz-IN	BNC connector
1	BNC	K2	BNC	14MHz-OUT	BNC connector
1	BNC	K1	BNC	70MHz-IN	BNC connector
1	BNC	K3	BNC	70MHz-OUT	BNC connector
2	BSP090	T4 T8	SOT223	BSP250	NPN Transistor
1	BSP100	T6	SOT223	BSP030	
1	C	C38	CAP100	1p8	
1	C	C37	CAP100	2p2	
1	C	C29	CAP100	4p7	
1	C	C28	CAP100	8p2	
4	C	C23 C34 C43 C46	CAP100	27p	
1	C	C33	CAP100	39p	
3	C-0805	C98 C102 C108	CC0805	1n	Capacitor
1	C-0805	C7	CC0805	3n3	Capacitor
1	C-0805	C89	CC0805	3p3	Capacitor
2	C-0805	C101 C103	CC0805	68p	Capacitor
4	C-0805	C36 C48 C79 C81	CC0805	82p	Capacitor
1	C-0805	C94	CC0805	100n	Capacitor
1	C-0805	C80	CC0805	120p	Capacitor
1	C-0805	C100	CC0805	150p	Capacitor
3	C-0805	C49 C78 C90	CC0805	180p	Capacitor
11	C-1206	C1 C4 C25 C30 C44 C52 C56 C59 C86 C93 C104	1206	1n	Capacitor
2	C-1206	C71 C72	1206	1p8	Capacitor
2	C-1206	C10 C11	1206	2p7	Capacitor
1	C-1206	C58	1206	2u2	Capacitor
3	C-1206	C8 C69 C75	1206	3n3	Capacitor
2	C-1206	C53 C55	1206	4n7	Capacitor

1	C-1206	C24	1206	6p8	Capacitor
12	C-1206	C5	1206	10n	Capacitor
		C13			
		C14			
		C26			
		C31			
		C35			
		C41			
		C50			
		C51			
		C57			
		C60			
		C87			
4	C-1206	C9	1206	12p	Capacitor
		C12			
		C70			
		C73			
1	C-1206	C85	1206	15p	Capacitor
4	C-1206	C18	1206	18p	Capacitor
		C22			
		C64			
		C68			
1	C-1206	C62	1206	22n	Capacitor
6	C-1206	C17	1206	22p	Capacitor
		C20			
		C21			
		C65			
		C67			
		C106			
3	C-1206	C19	1206	27p	Capacitor
		C66			
		C74			
4	C-1206	C76	1206	47n	Capacitor
		C77			
		C83			
		C84			
2	C-1206	C15	1206	47p	Capacitor
		C16			
		C40	1206	68p	Capacitor
1	C-1206	C82	1206	82p	Capacitor
10	C-1206	C6	1206	100n	Capacitor
		C27			
		C32			
		C39			
		C47			
		C61			
		C88			
		C91			
		C92			
		C99			
2	C-1206	C42	1206	180p	Capacitor
		C45			
1	C-1206	C105	1206	470n	Capacitor
1	CAP200RP	C3	CAP200RP	1000u/125V	Polarised Capacitor
1	CINCH	K7	CINCH	PTT IN	BNC connector
1	CINCH	K6	CINCH	PTT OUT	BNC connector
1	CP 1210	C2	CC1210	1u	Capacitor
2	CP "B"	CP3	CC1210	10u	Capacitor
		CP4			
1	CP "C"	CP2	SMD7227	100u	Capacitor
1	CP "D"	CP1	CC3012	100u	Capacitor
2	D-1206	D2	1206	1N4148	Diode
		D10			
1	D-1206	D9	1206	BAT165	Diode
1	D-1812	DS1	CC1812	P6KE15A	Diode
1	DO-213 AA	D5	DO-213 AA	1N4007 SMD	Capacitor
1	DZ-SMD	DZ1	DO-214AC	3V3	Capacitor
1	FDN335N	T1	SOT-23	FDN337N	NPN Transistor
1	FDN335N	T5	SOT-23	FDN337N	NPN Transistor
2	GALI-51+	U1	SOT-89B	GALI-51+	
		U5			
1	GALI-51+	U6	SOT-89B	HMC475	
3	GALI-51+	U2	SOT-89B		
		U3			
		U4			
2	IND200S	L8	IND200S	0.65/4/6	
		L9			
1	IND300	L7	IND300	1.8uH	Inductor

2	IND-SMD1210	L1	CC1210	1.5uH	Inductor
		L13			
1	IND-SMD1210	L25	CC1210	2.7uH	Inductor
3	IND-SMD1210	L20	CC1210	150nH	Inductor
		L21			
		L24			
1	IND-SMD1210	L12	CC1210	180nH	Inductor
4	IND-SMD1210	L5	CC1210	220nH	Inductor
		L6			
		L10			
		L11			
1	IND-SMD1210	L23	CC1210	470nH	Inductor
2	JMP2	J2	JMP2	{Value}	
		J5			
2	JMP3	J3	JMP3	{Value}	
		J4			
1	JUMPER	J1	JMP2		
1	LED-SMD	LD1	CC1210	LU	Light Emitting Diode
1	LM339	IC5	SO14		Low Power Low Offset Voltage Quad Comparators
1	LM7805-K	IC1	SOT-89B	LM7805	
1	LM7809	IC3	78XX	{Value}	5 Volt Voltage REGULATOR
7	LONCEK	L2	LONCEK	88-115nH	Variable Inductor
		L3			
		L4			
		L16			
		L17			
		L18			
		L19			
1	LONCEK	L22	LONCEK	160-190nH	Variable Inductor
1	MBRAF340T3G	D7	SMC	MBRAF340T3G	Resistor
1	MIXER1	MIXTX1	MIXER1	TUF-1+	
1	MIXER1	MIXRX1	MIXER1	TUF-1H+	
2	POT3T	P1	POT3T	10k	
		P2			
1	POTI	P3	POTI	10k	Potenciometer
1	PSRD-7227	PS1	CC 7227-1	MICROSM050F-2	Capacitor
1	Q	Q1	XTAL-V	56MHz	Crystal
2	R-0805	R48	CC0805	1k	Resistor
		R53			
2	R-0805	R51	CC0805	3k3	Resistor
		R54			
1	R-0805	R50	CC0805	22E	Resistor
1	R-0805	R49	CC0805	27k	Resistor
2	R-0805	R52	CC0805	33E	Resistor
		R85			
1	R-0805	R86	CC0805	47E	Resistor
1	R-0805	R83	CC0805	68E	Resistor
2	R-0805	R89	CC0805	100E	Resistor
		R90			
1	R-0805	R45	CC0805	150E	Resistor
1	R-0805	R88	CC0805	470E	Resistor
6	R-1206	R4	1206	0E	Resistor
		R19			
		R26			
		R32			
		R40			
		R81			
3	R-1206	R58	1206	1k	Resistor
		R69			
		R78			
4	R-1206	R34	1206	1k5	Resistor
		R35			
		R65			
		R68			
1	R-1206	R59	1206	1k8	Resistor
4	R-1206	R55	1206	1M	Resistor
		R60			
		R74			
		R77			
1	R-1206	R20	1206	2k2	Resistor
1	R-1206	R66	1206	3k3	Resistor
1	R-1206	R23	1206	6k8	Resistor

1 R-1206	R57	1206	10k	Capacitor
5 R-1206	R29	1206	10k	Resistor
	R56			
	R71			
	R79			
	R80			
1 R-1206	R5	1206	15E	Resistor
4 R-1206	R62	1206	15k	Resistor
	R64			
	R75			
	R76			
3 R-1206	R16	1206	47E	Resistor
	R17			
	R43			
1 R-1206	R42	1206	47k	Capacitor
1 R-1206	R72	1206	47k	Resistor
1 R-1206	R70	1206	68k	Resistor
2 R-1206	R8	1206	100E	Resistor
	R9			
1 R-1206	R63	1206	100k	Resistor
1 R-1206	R18	1206	150E	Resistor
1 R-1206	R30	1206	330R	Resistor
2 R-1206	R33	1206	560R	Resistor
	R36			
1 R-1206	R37	1206	680R	Resistor
7 R-1206	R6	1206	XE	Resistor
	R7			
	R27			
	R28			
	R31			
	R82			
	R84			
1 R-1210	R38	CC1210	18R/0,5W	Capacitor
1 R-1210	R87	CC1210	180E/0,5W	Capacitor
5 R-1210	R2	CC1210	240R/0.5W	Capacitor
	R12			
	R13			
	R21			
	R22			
5 R-1210	R1	CC1210	270R/0.5W	Capacitor
	R10			
	R15			
	R24			
	R25			
1 R-1218	R39	CC1812	47R/1W	Capacitor
1 RA08H1317M	PA1	H64S	RA07H0608M	
1 RK1-RF	RY1	1XIZM	RK1	Relay, One Contact Set, Break-Make, SPDT
1 STIKALO	SW3	KONTAKT2	PS15A	Switch, Single Pole, Single Throw, Normally Open
2 STIKALO-2	SW1	STIKALO-2	OS102011MA1QN1	
	SW2			
1 STIKALO-3	SW4	STIKALO-3	OS102011MS2QN1	
1 URCA-1	I1	URCA-1	100uA	